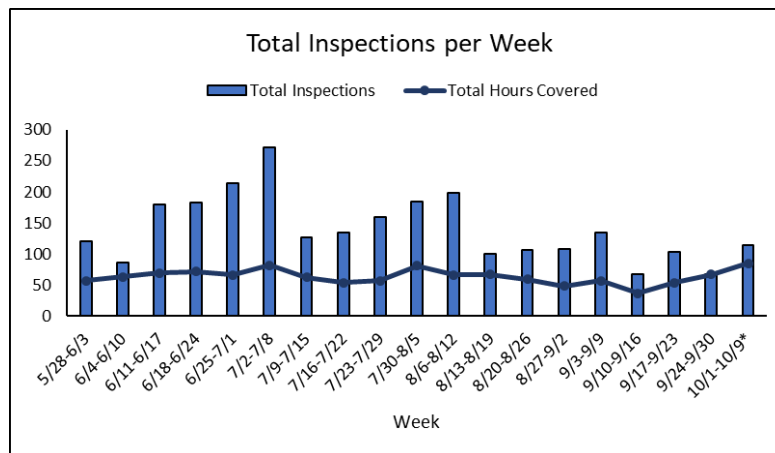
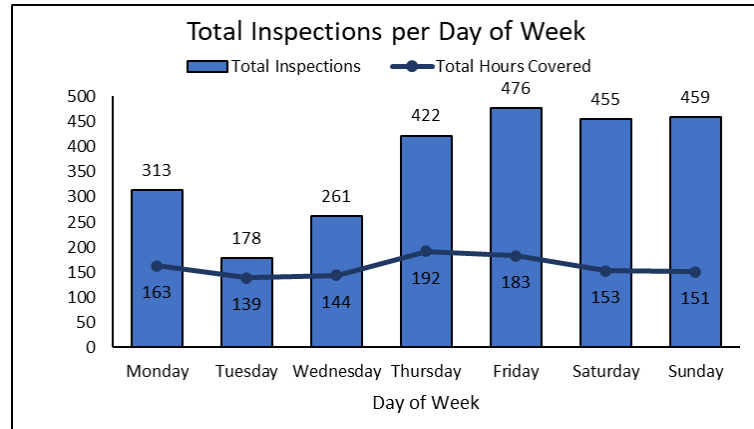
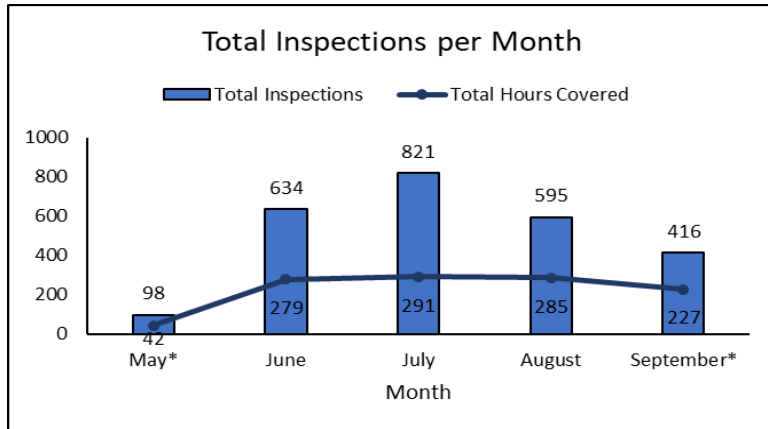


## CBI coverage graphs from 2023

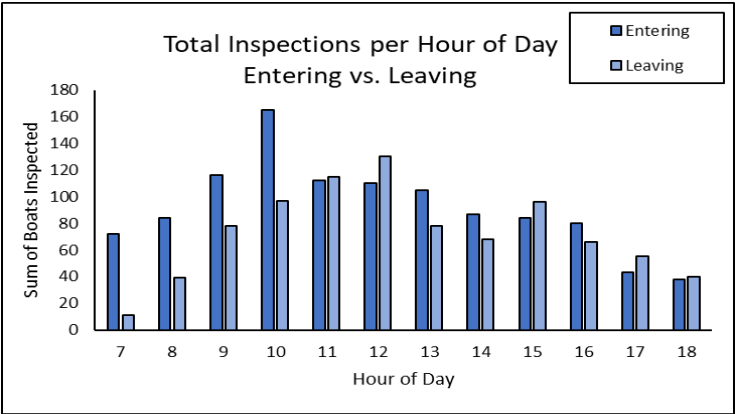
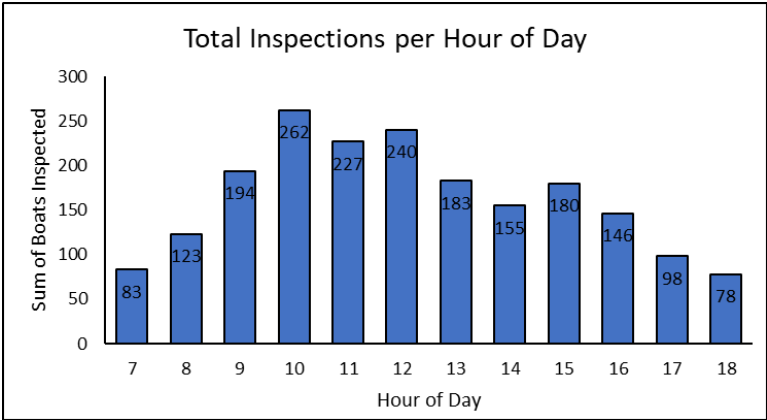
*The following graphs are meant to display the general trends observed at boat launches during the 2023 season. Please note that CBI coverage was not equal across boat launches for the length of the season. Coverage from Labor Day - Indigenous People's Day was not possible at all launches. The number of boats entering/leaving launches that did have some CBI coverage during September and October are wildly underestimated as we had difficulty finding staff for all shifts.*

### Long Pond

Based off of 1,124 hours covered between 5/26 and 9/30

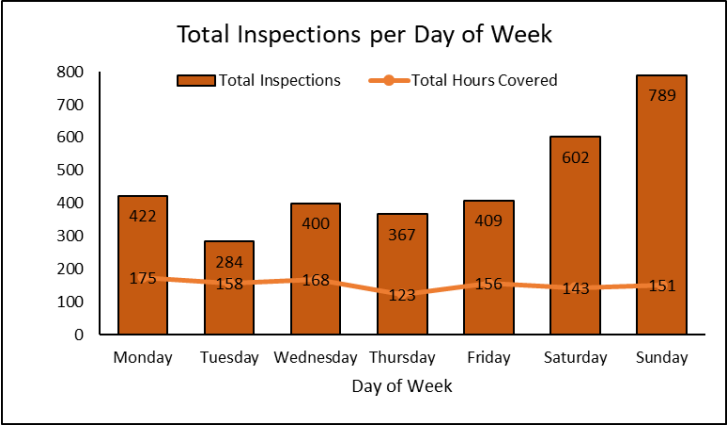
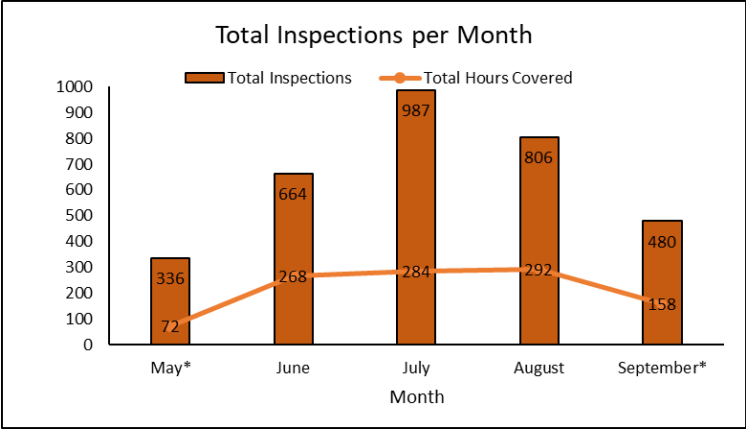


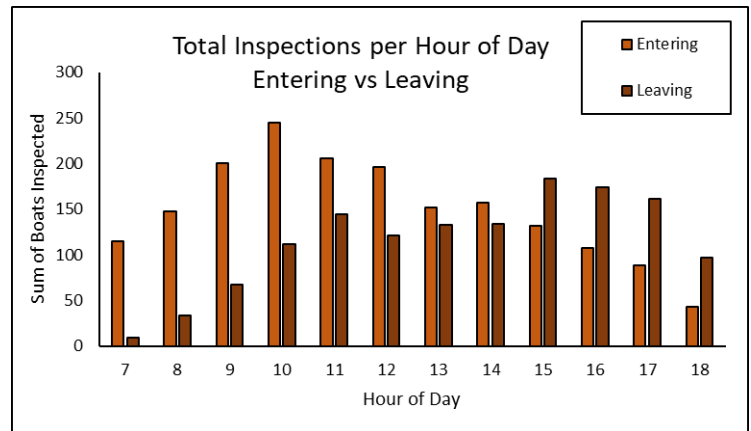
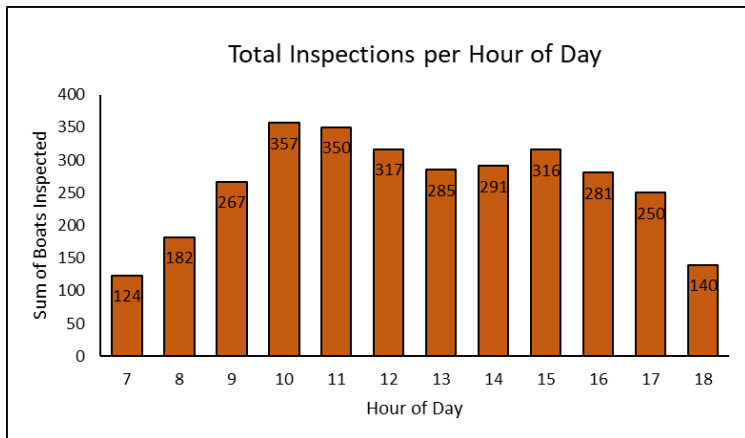
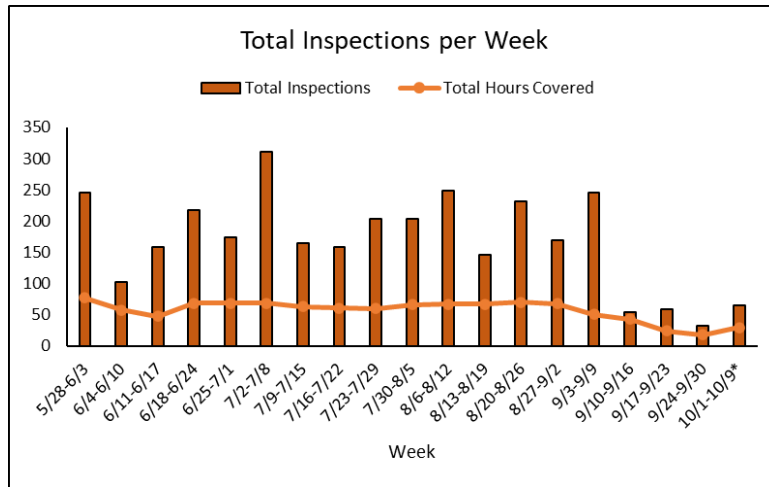
137 Main Street, PO Box 250, Belgrade Lakes, ME 04918 (207) 495-6039  
[sharon.mann@7lakesalliance.org](mailto:sharon.mann@7lakesalliance.org)



# Great Pond

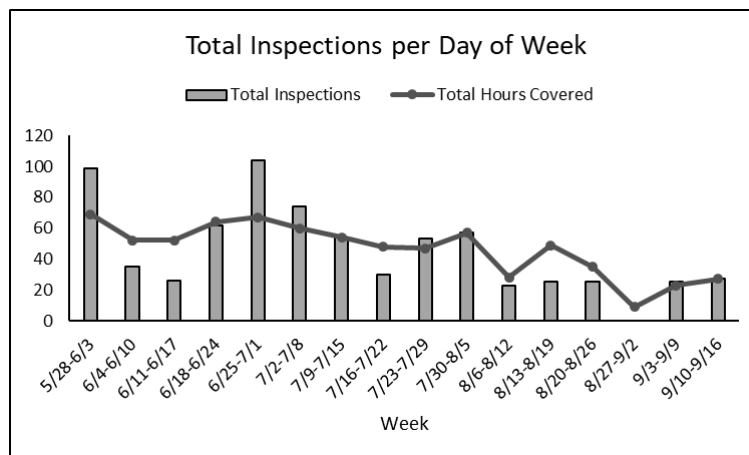
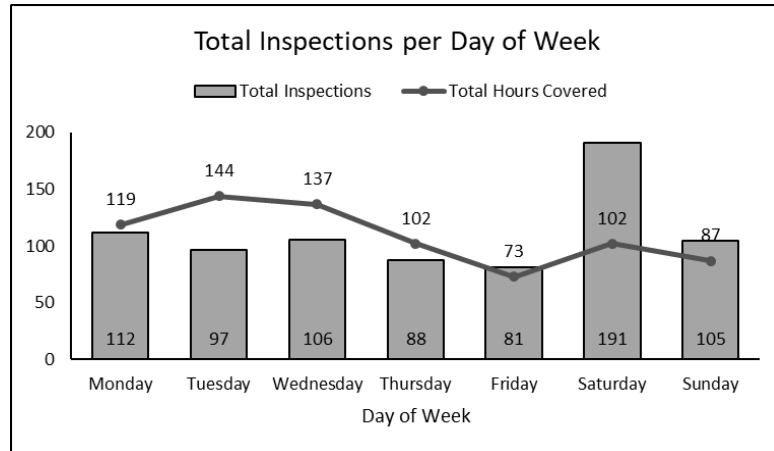
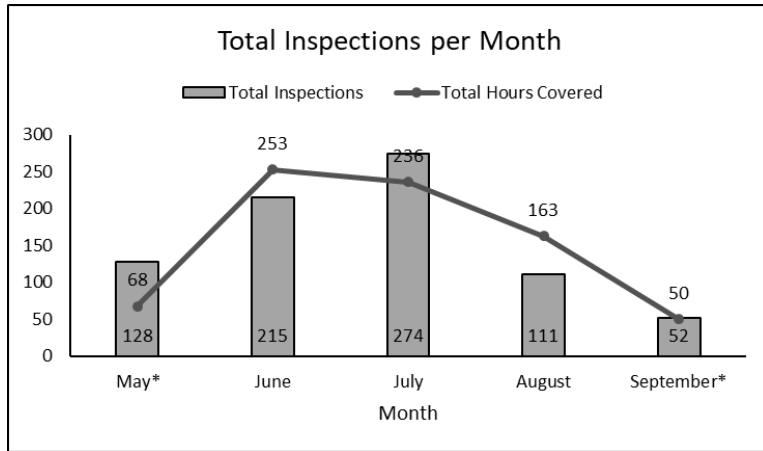
Based off of 1,073 hours covered between 5/26 and 9/30

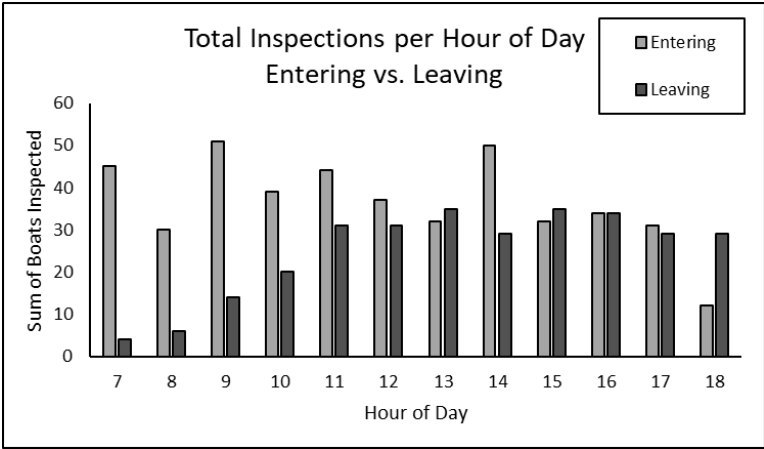
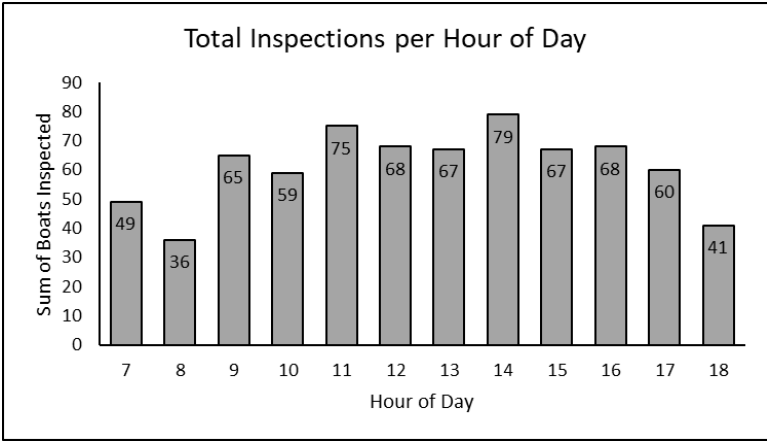




# East Pond

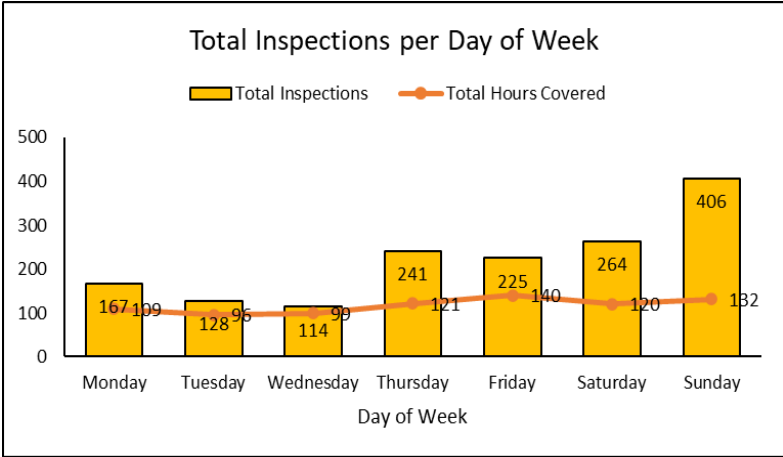
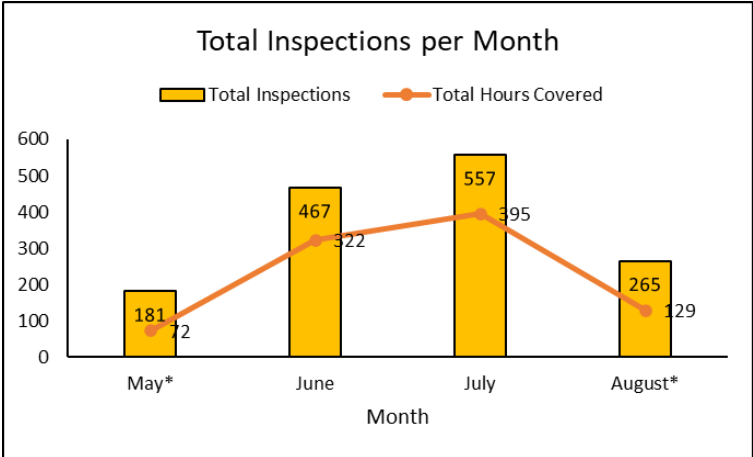
Based off of 770 hours covered between 5/26 and 9/15

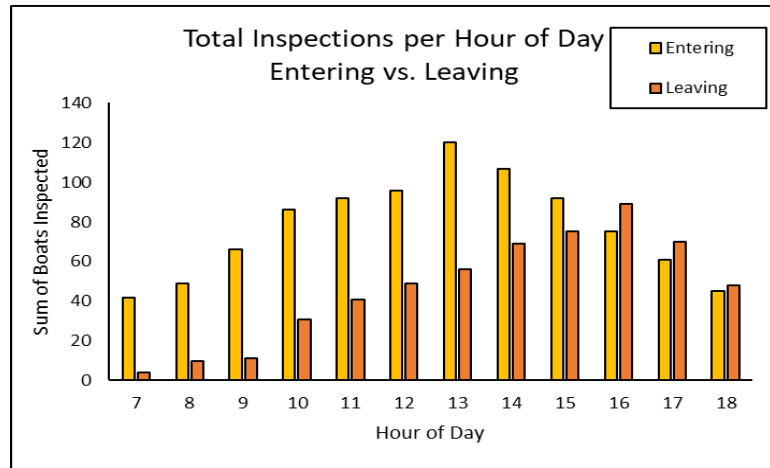
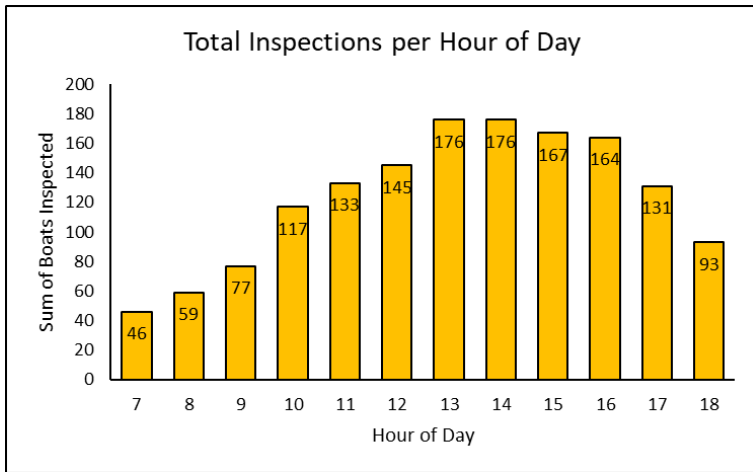
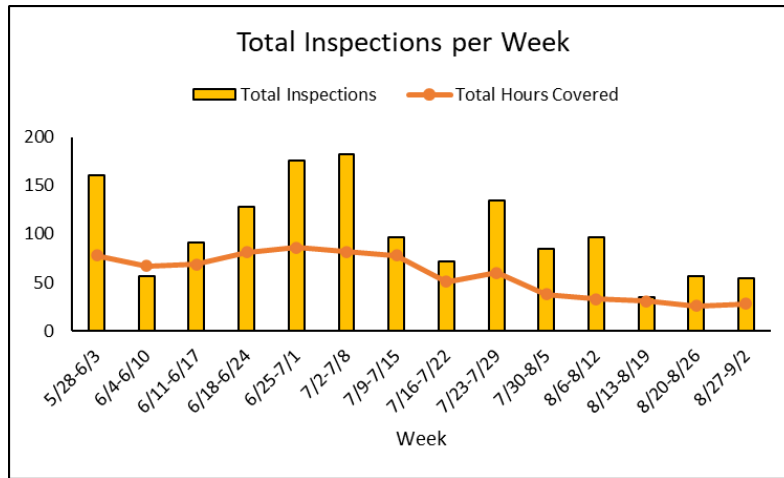




## Messalonskee (Oakland)

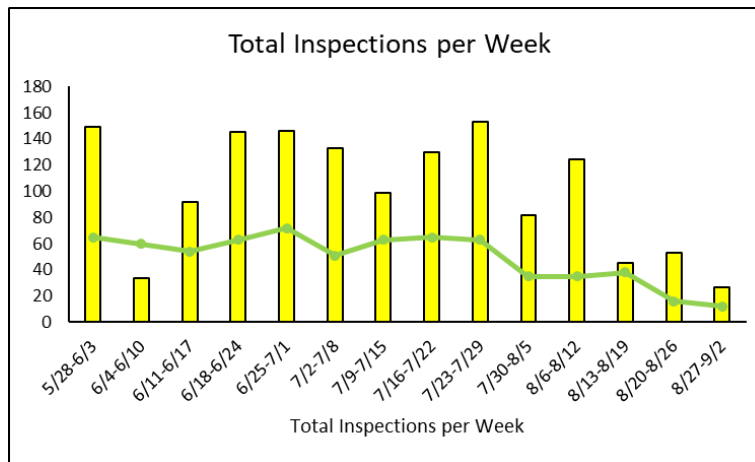
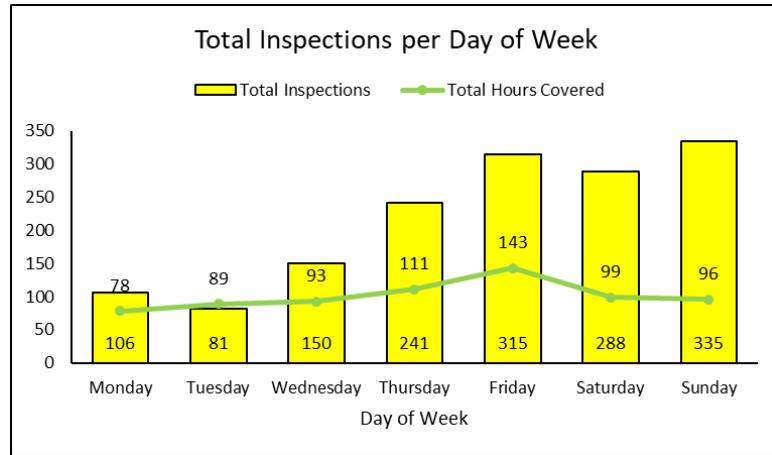
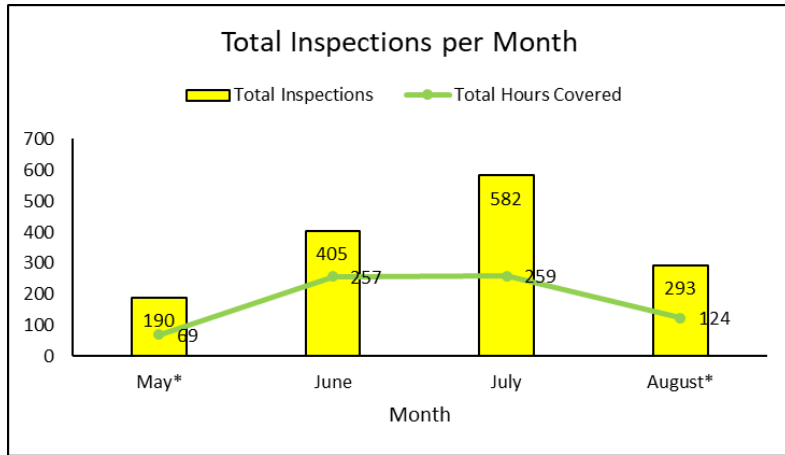
Based off of 818 hours covered between 5/26 and 8/31

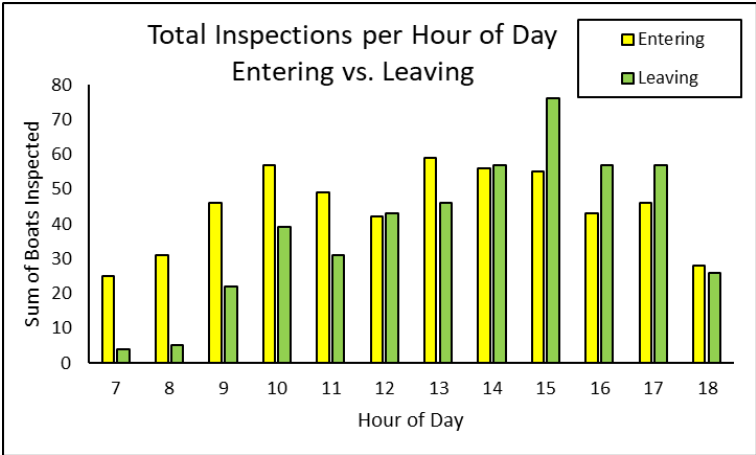
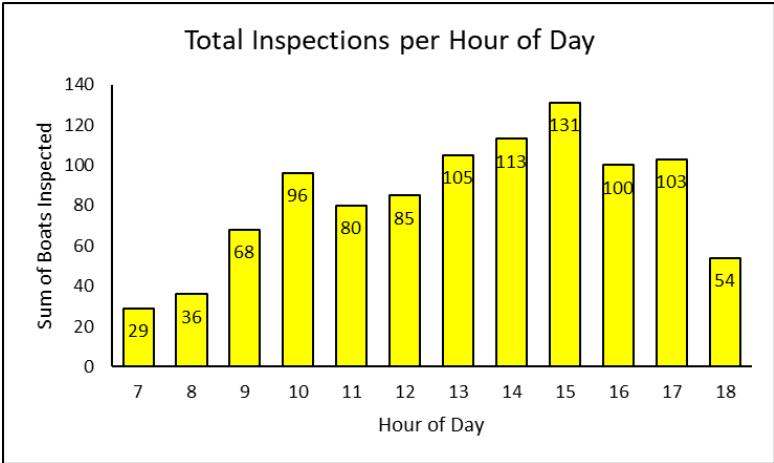




# Messalonskee (Sidney)

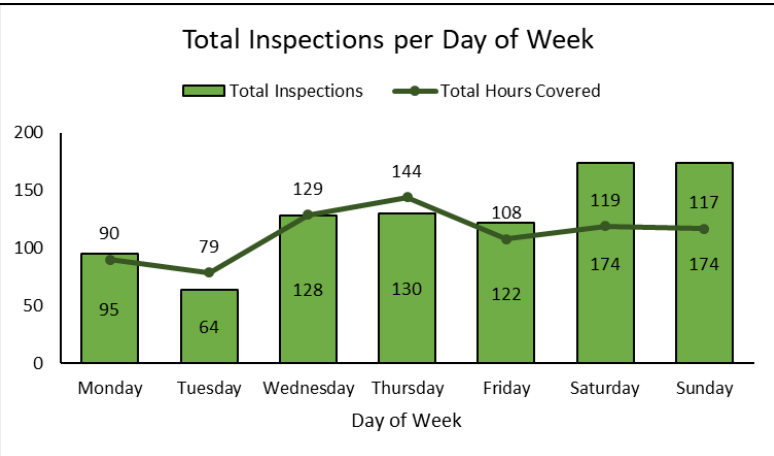
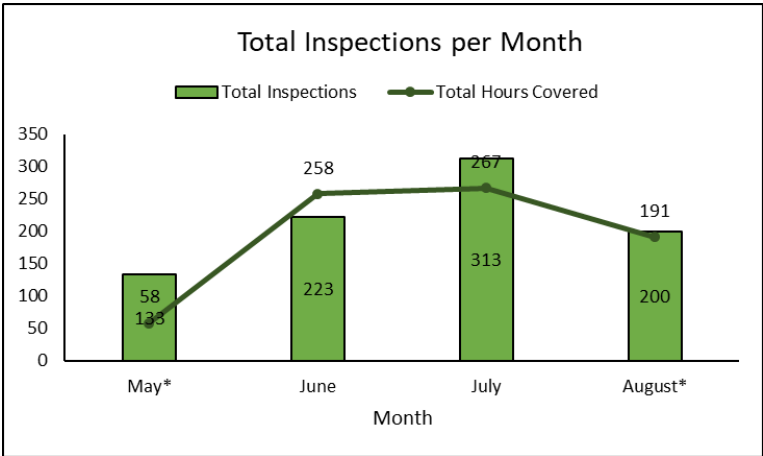
Based off of 709 hours covered between 5/26 and 8/27



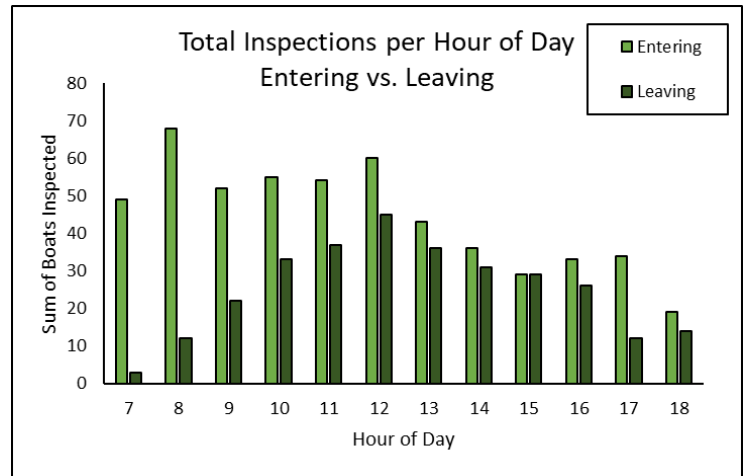
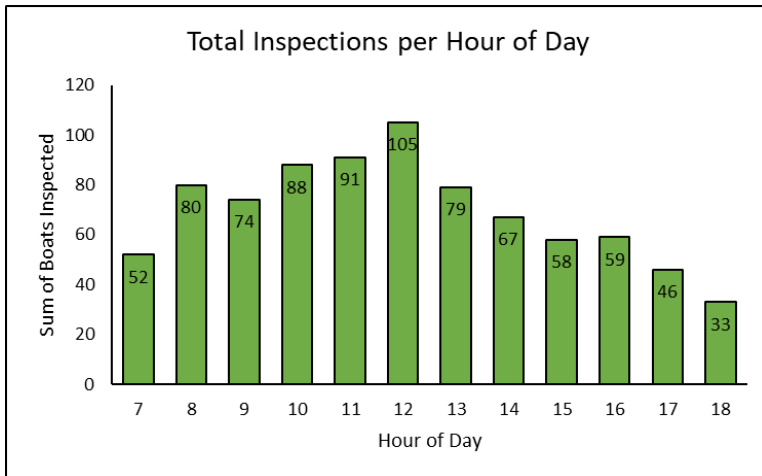
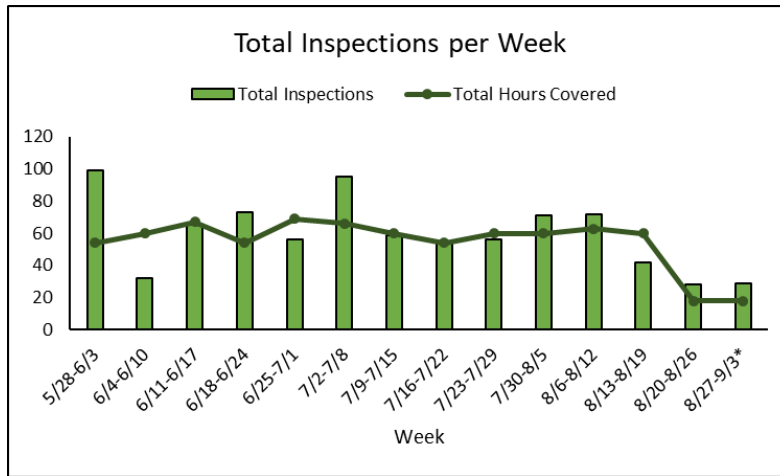


## North Pond

Based off of 787 hours covered between 5/26 and 9/3

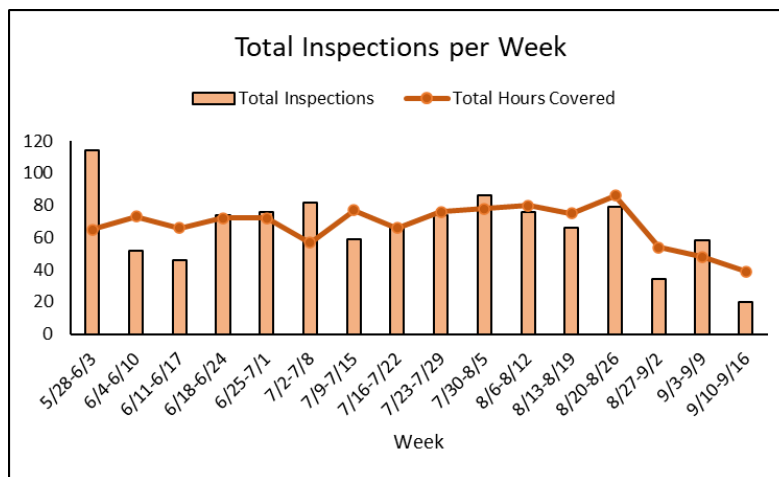
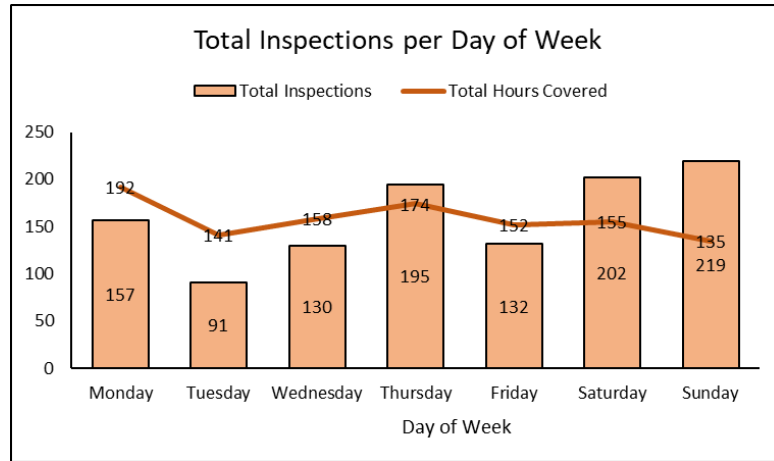
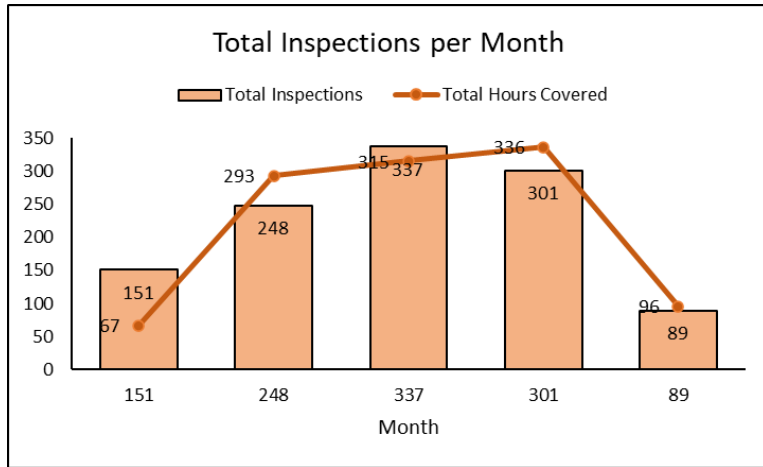






# Salmon Lake

Based off of 1,107 hours covered between 5/26 and 9/14



137 Main Street, PO Box 250, Belgrade Lakes, ME 04918 (207) 495-6039  
[sharon.mann@7lakesalliance.org](mailto:sharon.mann@7lakesalliance.org)

